

Short Bowel Syndrome

The Role of the Healthcare Play Specialist

By Tracy Warburton



A Holistic Approach

- For many of our children with Short Bowel Syndrome, the first year of life can be physically and emotionally challenging, for both the child and the family.
- From birth, babies often endure many medical and surgical interventions requiring long term hospitalisation, this can continue for many years. The resulting impact on the child and the family can be quite devastating.
- **Holistic care is essential** for these families to provide not only medical and physical input but also emotional support.
- This is where the role of The Healthcare Play

The Role of the Play Specialist

Initial intervention begins with a referral from the consultant or Ward Manager.



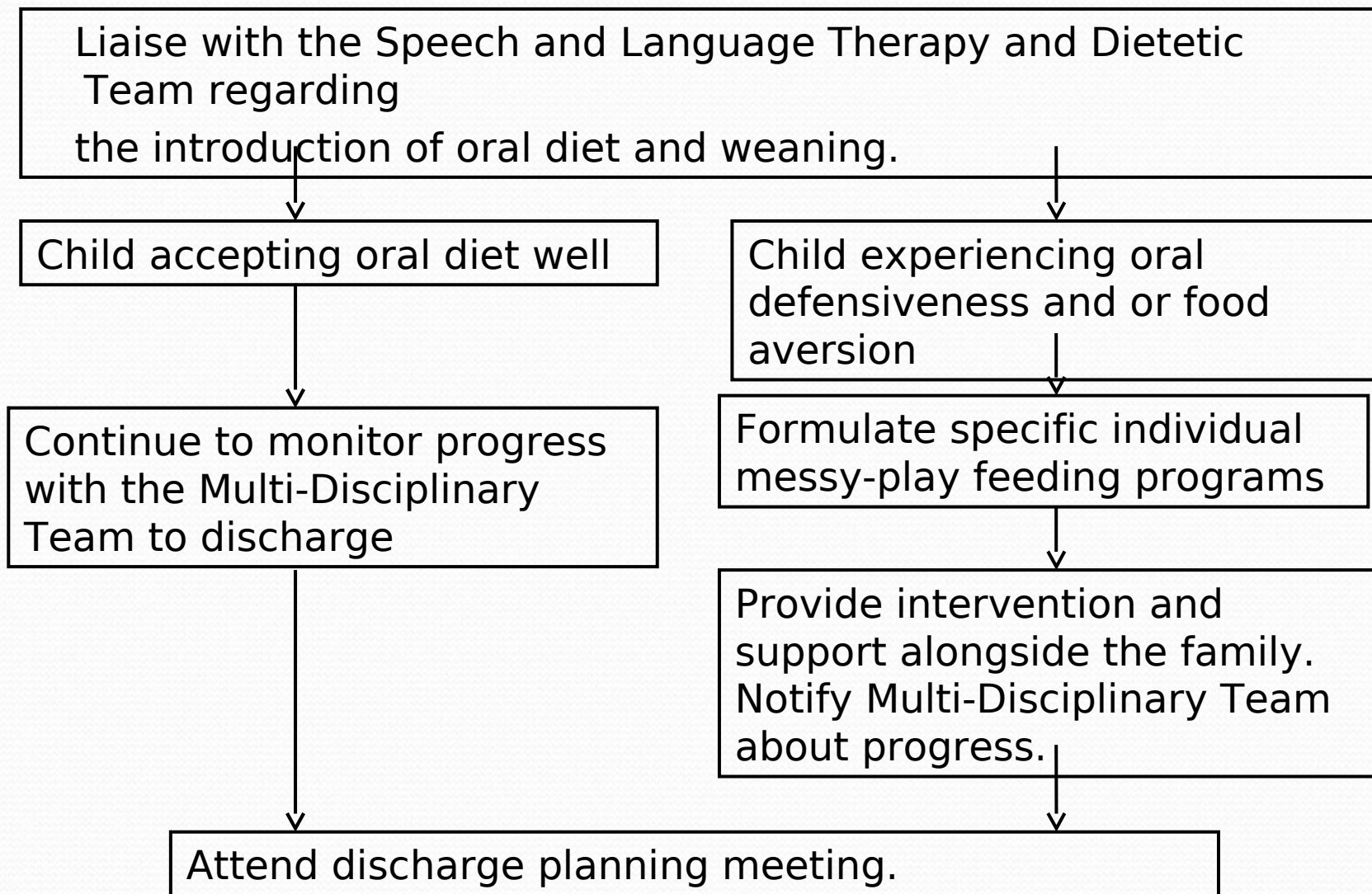
On transfer from Neonatal Intensive Care Unit to Ward, Play Specialist will introduce self to patient and family.



Liaise with Physiotherapy and Occupational Therapy Services with regard to developmental assessment and formation of play programs.



Consult with and assist the Play Leader with regard to the implementation of the developmental play programs.



Short Bowel Clinic – continue support around overall developmental progress including feeding, behaviour and emotional Issues.



Continue liaison with Multi-disciplinary Team both in the Trust and in the community regarding patient progression and any other interventions required.

Developmental Play



Preparation for Surgery



Preparation for Surgery Role Play



First with dolls and toy medical kit.



Then introduce real medical equipment



Food Aversion – Messy Play



SENSORY/TEXTURE PROGRAMME

ACTIVITIES FOR BABIES

- Stroke and Touch
- Peek a Boo
- Hide and Find: Sensory Box

SENSORY- TEXTURE ACTIVITIES FOR TODDLERS, PRE-SCHOOL and SCHOOL AGE CHILDREN

- Sensory Box
- Filling and Pouring
- Vegetable Printing
- Collage (paper and dry foods)
- Games with Pretend Food and Real Food
- Making Necklaces
- Egg Heads
- Teddy's Tea Party
- Playdough Modelling
- Dinosaur World/Swamp
- Build a Model Village
- Splatter/Finger Painting